

M.E.A.S.U.R.E. of Success: A Snapshot of Achievement



Sarah Pyle Academy for Academic Intensity
Student Services Department
501 N. Lombard Street
Wilmington, Delaware 19801
(302) 429-4158

The Sarah Pyle Academy is a high school program which targets students at risk of dropping out of high school. The average student came into the school with five or fewer credits and is 16-18 years old.

Mission:

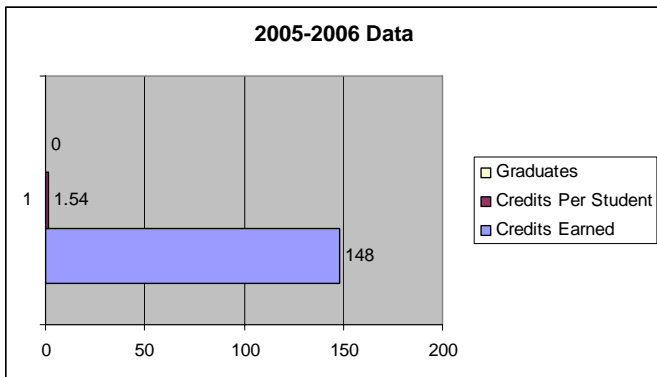
The mission of the student services department of Sarah Pyle Academy is to help students reach their short and long term goals for academic, career, and personal success. We seek to inspire students by providing individualized support, guidance, and counseling services.

Elements of Data Considered:

As the school is in the second year of its pilot, the goal was to demonstrate the ability of students to exceed prior year credit accumulation and generate potential graduates. Average annual credits for prior years were considered as was the prior year's graduation rates. The specific group of focus was identified as students with 9 or more credits.

Analysis of Data:

In evaluating the data collected through surveys in addition to the credit accumulation data from the prior school year, it was clear that students needed clear communication related to credits, post high school planning, and expectations. The chart below shows the total credits earned last year along with the total number of graduates.



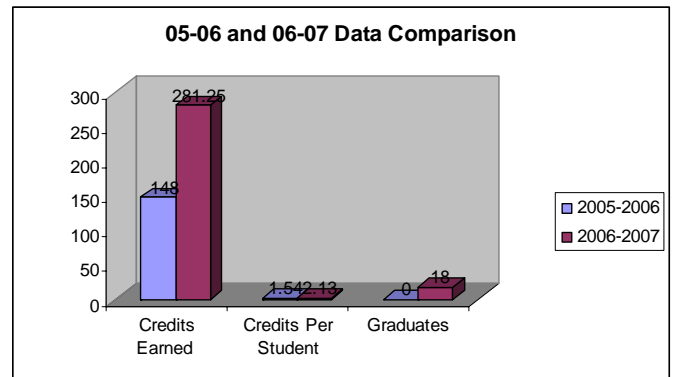
Stakeholders Unite-Support & Feedback:

The key stakeholders involved in identifying the activities needed to support students were teachers, students, and parents/guardians. Based on the survey and conversational feedback, students were afforded an opportunity to have one on one consultation regarding credits needed, were provided with Life Skills classes to work on social and conflict

resolution skills, and were provided intensive plans to get them back on track when they were not making sufficient progress.

Reflect, Re-Analyze, and Revise:

As a result of this year's intense focus on helping students with 9 or more credits achieve graduation, we demonstrated a huge increase in the number of credits earned, the average credits earned per student, and the number of graduates. In addition, of the 18 graduating seniors, over 50% have completed the preliminary steps for registering for a 2 or 4 year college.



In looking at these results, we plan to initiate a student advisory program to further personalize the monitoring of student progress. In doing this, we hope to double the average credits earned as well as the number of graduates.

Educate the Community:

In an effort to continue to educate our community about our successes here at Sarah Pyle Academy, we have held several community open houses, presented at the state legislature, and maintained a school newsletter. We plan to continue these efforts and increase the effort through inclusion of a parent volunteer program and by providing parent advocacy workshops.

Our parents and students have received the activities implemented by the student services department well as indicated by the following comments made by students:

“I like that you can be all that you can be”

“Sarah Pyle make us more focused and determined on what we need to get done individually”

“It is so good to know exactly what my son needs to graduate and how he can make it happen.”

For more information on the activities implemented in this summary, please contact the Student Services Department Chair, Laura Malmstrom at 302-429-4158 x12467